

ISUZU

THE PICK-UP PROFESSIONALS

Isuzu Ireland, Naas Road, Dublin 12, Ireland.
Phone: +353-1 419 4500 | www.isuzu-ireland.com



ISUZU D-MAX

THE ALL-NEW

ISUZU D-MAX



Introducing the all-new enhanced Isuzu D-Max

Welcome to the new enhanced, facelifted ISUZU D-MAX, toughness redefined. Encompassing new styling, all new enhanced comfort - enhanced safety and enhanced driver experience. The new D-MAX comes complete with an all-new drivetrain, increased power delivery and fuel efficiency, with no compromise to performance. The Introduction of the all new 1.9ltr engine, which retains its class-leading 3.5 tonne towing capacity. Whether it's hauling big loads, powering through the work week, cruising through the weekend or going where the others won't. This is one pick up you can depend on. Put it to the test. You won't be disappointed.



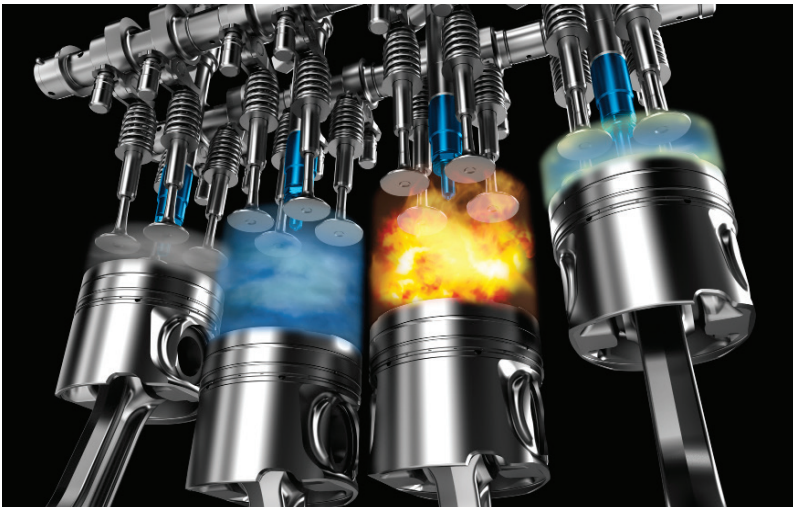


**NOT DOWNSIZED
BUT RIGHTSIZED**



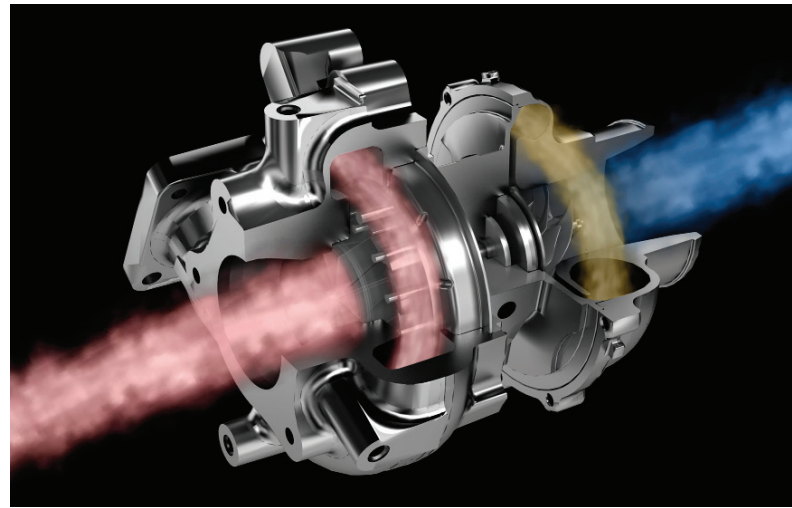
**THE PICK-UP WITH
TRUE TRUCK DNA**

FACTORY-SUPPORTED 5 YEAR WARRANTY



Efficiency & Power

We've called on everything we learned from over 70 years of building the highest quality diesel engines, to create the most enhanced fuel efficient D-MAX engine to-date. A brand new 1.9L Turbo diesel powerhouse has been rebuilt from the ground-up to deliver exactly what you need, when you need it - with plenty to spare.



Enhanced Reliability

With 120kW / 360Nm flat torque performance, with plenty of acceleration at highway speed and a class-leading 3.5 tonne towing capacity, the new D-Max is backed up with ISUZU's famed reliability.



**ENHANCED
COMFORTS**



FEATURES

Enhanced New ISUZU D-Max

It's not just space and comfort that the interior of the all new ISUZU D-MAX delivers. At your finger tips you will find all the technology and modern conveniences you have come to expect in a new car.

Electroluminescent instruments, climate-control, air conditioning and keyless entry are all available. While steering wheel control switches give you instant and safe access to the new 6 speaker stereo system including a new roof-mounted "Exciter" speakers, with iPod and Bluetooth connectivity.



Enhanced Driver Experience

A spacious cabin provides greater head and leg room for front and rear passengers, a newly designed wider door arches and A-pillar assist grips make access even easier. From advanced noise control to keep the outside world at bay, to a multitude of storage compartments, no effort has been spared to ensure every drive is a pleasurable journey.



Enhanced Exterior

As part of the D-Max model update, the exterior has had some modifications and updated the front bumper, grille and headlights which make the D-Max 'more aggressive' for 2017. It also comes with new LED daytime running lights, plus a new design and 18-inch alloy wheels for top-spec variants.

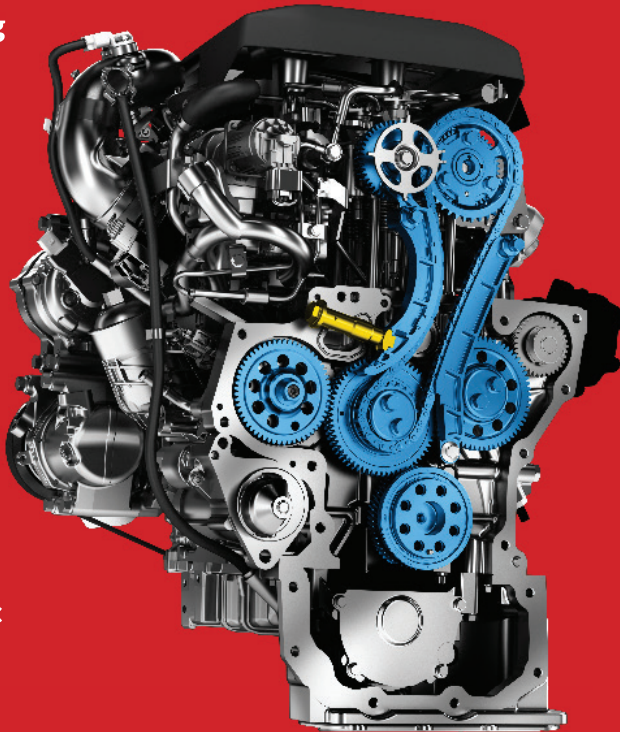


Enhanced Safety Features

The new Isuzu D-Max comes with six airbags – and extend side-curtain coverage to any rear passengers. The D-Max also has electronic stability control, which can help you control a skid (applying the brakes automatically to one or more wheels). On every D-Max, a reversing camera is either optional or (on LS-U and LS-Terrain versions) comes as standard.



Enhanced Engineering



Timing Gear and Chain with Automatic Chain Adjuster

All New Features.

- 6-speed automatic transmission also available for basic models **
- LED daytime running lights
- Heated and electrically adjustable exterior mirrors for Basic models **
- Radio remote control for central locking on basic models
- Keyless entry as standard
- Electric stop-start*
- Electric dampness*
- Dual front & side airbags*
- Daytime running lights *
- 18 inch light alloy wheels custom fit
- 8 speakers ***
- 7" navigation system ***
- New multi-information display with gear change indicator
- Unlocking the vehicle and starting the engine ***
- Rearview Camera ***
- Hill ascent assist
- Hill descent assist
- Trailer stab control

* Except for single cab ** Except for single cab *** for Premium and Premium + models

**NO COMPROMISE
TO PERFORMANCE**





Pick-up Evolution

Nearly 50 years of refinement and pioneering development ensures you can depend on the all new ISUZU D-MAX

The origin of ISUZU's pic-up can be traced back to the ISUZU WASP in 1963, which was produced under the initiative to build a car that looked like a passenger vehicle but functioned as a truck.

Over the next 40 years – backed by record sales, ISUZU pick-ups were exported to north America, Europe, South Africa, Australia.

To this day, over 6 million people depend on the strength, reliability and economy of ISUZU pick-up trucks.

**INCREASED
BHP & FUEL
EFFICIENCY**

NEW 1.9LTR ENGINE

The Modern day Workhorse

With 3.5 tonne capacity, a larger and stronger rear tray and 4x4 electronic shift on-the-fly, there's not much it can't handle, big loads, steep gradients, tough terrains, bumps and scrapes... it takes them all in it's stride.

The fact that the ISUZU D-MAX has the DNA of a commercial vehicle is also evident in its impressive qualities as a transporter. The ISUZU D-MAX can accommodate up to one tonne of cargo on its generously dimensioned loading area.

And all models come with all-wheel drive approved for 3.5 tons of trailer load. Whatever it is to transport, from the lawnmower to the speedboat, you can rely on the D-Max.



Ergonomics

Ergonomically designed seats provide superior support and allow you to appreciate the luxury touches you wouldn't expect in a pick-up.



Cabin Structure

A brand new cabin structure, pre-tensioning seatbelts and ISOFIX for a child seat means even more protection.



Advanced Safety

You'll also have the extra assurance of Electronic Stability Control (ESC), Traction Control System (TCS) and ABS with Brake Assist (BA).



**THE D-MAX RETAINS IT'S
CLASS-LEADING 3.5 TONNE
TOWING CAPACITY**



**D-MAX
FOR
WORK
& PLAY**





The Best Partner

The D-MAX has everything that makes a pick-up the best partner: it is as reliable, durable and robust as the name has always promised. We have improved the rest: a Euro 6 engine is installed and convinces with lower fuel consumption and CO2 emissions. It is the most powerful D-MAX ever .

It moves up to 1,225 kg load and 3.5 tonne trailer load (on all 4WD models) over the floor and stone. Low-noise, 5-year factory warranty and the choice between a 6-speed manual or 6-speed automatic transmission * round off the package and convince with ease.



BRAND HERITAGE

History of Isuzu

Backed by a legacy of history, technology and spirit ISUZU continues to be a pioneer in a new age

Founded in 1916 ISUZU Motors Limited has the longest history of any Japanese vehicle manufacturer and is one of the world's largest producers of commercial vehicles spanning light, medium and heavy weight classes.

ISUZU Motors Limited is also the world's largest commercial diesel engine manufacturer, producing over 23 million engines to date.

ISUZU diesel engines are preferred by top-level automobile manufactures around the world for their superior performance and exceptional fuel economy. ISUZU's high quality diesel engines are not only used in road transport applications, but also as heavy machineries, power generation and for the marine propulsion applications.



NEW FUTURE

The New Future

Nearly 50 years of refinement and pioneering development ensures you can depend on the all new ISUZU D-MAX

The origin of ISUZU's pic-up can be traced back to the ISUZU WASP in 1963, which was produced under the initiative to build a car that looked like a passenger vehicle but functioned as a truck.

Over the next 40 years – backed by record sales, ISUZU pick-ups were exported to north America, Europe, South Africa, Australia.

To this day, over 6 million people depend on the strength, reliability and economy of ISUZU pick-up trucks.





PURSUIT OF PEOPLE'S TRUST

This underpins all product development at ISUZU. As a matter of principle, the vehicles we manufacture must be worthy of the trust of our customers. This philosophy guides us in perfecting our technology.

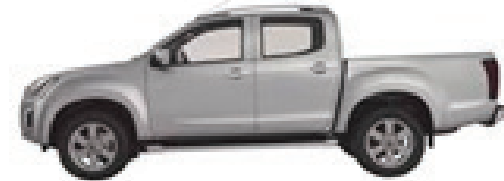
Corporate Social Responsibility

To reduce the environmental impact of our vehicles, ISUZU is fully committed to lowering emissions over the course of the vehicle's life cycle from the materials procurement to disposal and recycling.

Development of next-generation automobiles using alternative fuels and electricity can be illustrated by our recent design of an electric bus and plug-in hybrid vehicle (PHV).

It has been our mission to support people's lives through transport, by offering a wider range of commercial vehicles and a full line-up of diesel engines to contribute to a productive lifestyle.

We continue to take on the challenge of becoming a driving force in the lives of people around the world.



COLOUR OPTIONS

VEHICLE MASS & DIMENSION

VEHICLE MASS (BASIC CURB WEIGHT)

*Note : *1. Except CAB-CHASSIS models.

*2. Weight distribution is varied depend on the grade and optional equipment.

Unit : kg

MODEL				GVW	GAW		GTW		GCW		Curb Weight		
					Front	Rear	Trailer Without Brake	Trailer With Brake	Trailer Without Brake	Trailer With Brake	Weight Distribution ^{*1, *2}		Total
										Front	Rear		
REG.	4x2 STD-RIDE	TFR87JS	6MT	3,000	1,250			2,500		5,500	975	715	1,690
	4x4	TFS87JS	6MT								1,080	755	1,835
EXT.	4x4	TFS87JP	6MT	3,050	1,350			3,500		6,000	1,090	790	1,880
	4x2 STD-RIDE	TFR87JD	6MT	3,000	1,250	1,870	750	2,500	3,750	5,500	995	775	1,770
CREW	4x4	TFS87JD	6MT								1,100	815	1,915
			6AT	3,050	1,350			3,500		6,000	1,100	820	1,920

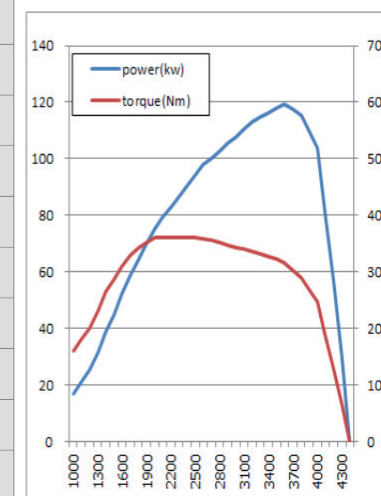
*Note :

*1. Except CAB-CHASSIS models.

*2. Weight distribution is varies depending on the grade and optional equipment

POWER TRAIN & CHASSIS

	DIESEL
	RZ4E-TC NEW
Max. Power kW(ps)/rpm*	120kW (164ps) / 3,600 rpm
Max. Torque Nm(kgm)/rpm*	360Nm (36.7kgm) / 2,000-2,500 rpm*1
Configuration	4cyl.,in-line
Bore X Stroke (mm)	80.0 X 94.4
Displacement (cm ³)	1,898
Camshaft	DOHC
ACG	90A
Starter motor	12V-1.6kw
Emission	EURO-6
Others	Electric controlled fuel injection (with common rail) VGS turbo



* ISO NET

7-2 EXTERIOR DIMENSIONS

7-2-a REGULAR CAB

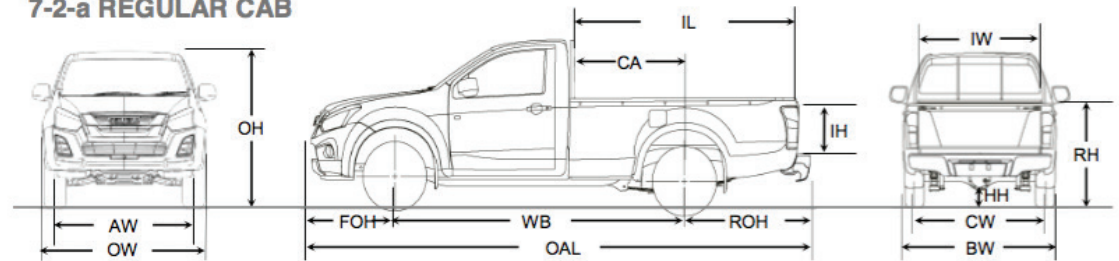


Figure. : 4x4 model (w/o REAR STEP BUMPER)

Unit : mm

MODEL			EXTERIOR DIMENSION															
			LENGTH						WIDTH				HEIGHT					
			OAL	WB	FOH	ROH	IL	CA	OW	AW	BW	CW	IW	OH	HH	RH	IH	
REG.	4x2 STD-RIDE	TFR87JS	RBA	5,315	3,095	905	1,315	2,305	1,235	1,775	1,510	1,730	1,510	1,570	1,685	190	1,160	440
	4x4	TFS87JS	RBA	5,215 ^{*1} 5,110 ^{*2}			1,215 ^{*1} 1,110 ^{*2}			1,860	1,570	1,820	1,570			1,780	225	

*1 : without REAR STEP BUMPER , *2 CAB-CHASSIS models

7-2-b EXTENDED CAB

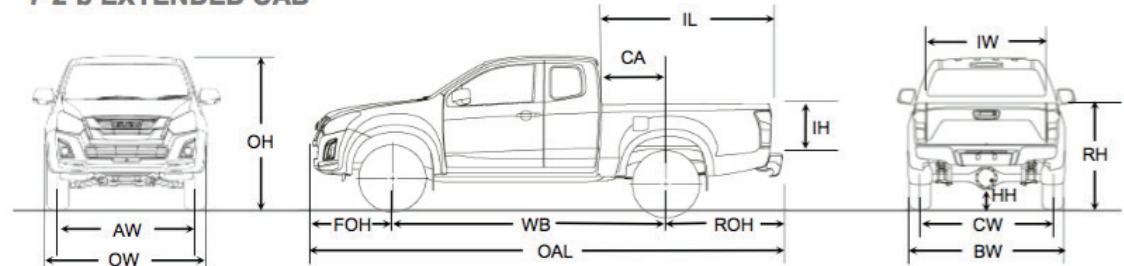


Figure. : 4x4 model (w/o REAR STEP BUMPER)

Unit : mm

MODEL			EXTERIOR DIMENSION															
			LENGTH						WIDTH				HEIGHT					
			OAL	WB	FOH	ROH	IL	CA	OW	AW	BW	CW	IW	OH	HH	RH	IH	
EXT.	4x4	TFS87JP	RBA	5,295	3,095	905	1,295	1,795	740	1,860	1,570	1,820	1,570	1,530	1,780	225	1,295	465
		RBD									1,830 ^{*1}		1,790 ^{*1}		235 ^{*1}	1,305 ^{*1}		

*1 : 255/60R18

7-2-c CREW CAB

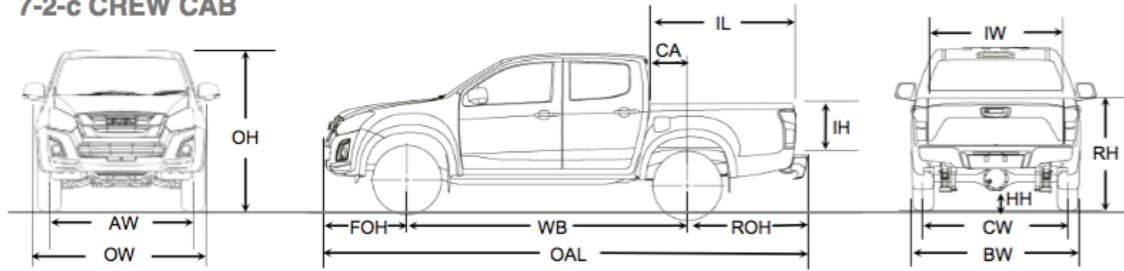


Figure : 4x4 model (w/o REAR STEP BUMPER)

Unit : mm

MODEL				EXTERIOR DIMENSION														
				LENGTH					WIDTH				HEIGHT					
				OAL	WB	FOH	ROH	IL	CA	OW	AW	BW	CW	IW	OH	HH	RH	IH
CREW	4x2 STD-RIDE	TFR87JD	RBA							1,775	1,510	1,710	1,510		1,690	190	1,185	
			RBA	5,295	3,095	905	1,295	1,485 1,552 ^{*1}	430			1,820		1,530	1,785	225	1,295	465
	4x4	TFS87JD	RBD						1,860	1,570	1,820							
			RBD									1,820 1,830 ^{*2}	1,570		1,785 1,795 ^{*2}	225 235 ^{*2}	1,295 1,305 ^{*2}	

*1 : Inside of cargo box at floor *2 : 255/60R18



* Photo : Design working model
* Roof rail is an accessory which was not installed from the factory. Distributors have to buy and install by their own.



ISUZU D-MAX

ISUZU

THE PICK-UP PROFESSIONALS

Your Local Dealer:

Isuzu Ireland reserves the right to change specifications and equipment without notice. Details of specifications and equipment mentioned or shown in this brochure are also subject to change to meet local conditions and government requirements. Features and specification may vary in appearance and/or availability according to region. Accessories and equipment shown in this brochure have been used for illustrative purpose only. Please inquire at your local ISUZU distributor or dealer for more complete details on available models and their specifications.

Isuzu Ireland, Naas Road, Dublin 12, Ireland.
Phone: +353-1-419 4500 | www.isuzu-ireland.com